

MWP

RECEIVED: 19/12/2025

**Appendix 1C: Community
Engagement Report
Ballynisky Wind Farm**

Ballynisky Green Energy Ltd.

December 2025

RECEIVED: 19/12/2025



Community Engagement Report



CONTENTS

Report Objective	4
Community Engagement Guidelines	4
The Community Team	5
Project Background	5
Site Designation	6
Export Capacity	6
Supporting the Limerick Climate Action Plan 2024–2029	6
Supporting the Limerick Development Plan 2022–2028	7
Community Benefits and Community Benefit Fund Distribution	8
➤ Environmental:.....	8
➤ Employment	8
➤ Financial:.....	8
Methodology	9
Strategy Objectives	9
The Approach	9
Community Engagements Phases	10
Phase One: Research.....	10
➤ Housing Registrar.....	10
➤ Electoral District.....	10
➤ Community Overview:.....	10
Phase Two: Engagement.....	10
Phase Three: Review	10
Community Consultation Milestones.....	11
Project Website Launch.....	12
Notification to TD'S & Councillors.....	12
Notice of Commencement of Public Consultation.....	12
Project Letter & Leaflet	13
Information Leaflet	14
Letter in relation to Concerns Regarding Misinformation.....	15
Door to Door Visits.....	17
Community Exhibition.....	18
Engagement with Newcastle West Golf Club.....	19
Education: School Tours	19
Phone Calls.....	19
Emails	19
Ongoing Contact	19
Resources	19

RECEIVED: 19/12/2025

Key Statistics on Engagement	20
Key Issues Raised During Consultation	21
Noise	21
Shadow Flicker	21
Local Action Group.....	21
Coolcappa National School.....	21
Public Opinion.....	21
Summary.....	22
References	23

RECEIVED: 19/12/2025

FIGURES

Figure 1 Site Area Map	5
Figure 2 Limerick Development Plan Wind Energy Zoning	6
Figure 3 Worked example of how the Community Benefit Fund is allocated.....	8
Figure 4 Community Engagement Touch Points.....	10
Figure 5 Notice of Public Consultation.....	13
Figure 6 Letter to Residents.....	13
Figure 7 Resident Leaflet.....	14
Figure 8 Letter re Misinformation.....	16
Figure 9 Climate Change & Renewable Energy Brochure.....	17
Figure 10 Public Consultation Notice	18

TABLES

<u>Table 1 Key Engagement Stages</u>	<u>9</u>
<u>Table 2 Community Engagement Milestones</u>	<u>11</u>
<u>Table 3 Engagement Statistics</u>	<u>23</u>

Report Objective

The purpose of this report is to set out the method in which Ballynisky Green Energy initiated and carried out meaningful community consultation and engagement in the geographical area surrounding the site of the proposed project. This consultation process represents Ballynisky Green Energy's continued commitment to actively engage with the community, to place value on their contribution and involvement, and to ensure their views and queries were taken into consideration as plans for the proposed project developed.

Community Engagement Guidelines

Wind energy developments are subject to both statutory requirements and best practice guidance for community engagement. Wind Energy Ireland have set out best practice guidance for community engagement that advocates for meaningful consultation throughout the pre-planning, planning, construction, and operational phases. This includes the creation of a project website, appointment of a community liaison officer and the implementation of door-to-door visits. Throughout the planning and construction phases it encourages project updates and leaflets to be readily accessible for the community near the project. This follows on through the operational phase, where it's required to maintain the project website with up-to-date information on the project, as well as the continued engagement with the community.

In relation to national guidance on community engagement and consultation for wind energy developments, the Wind Energy Development Guidelines (Department of Environment, Heritage and Local Government, 2006) state that, "While it is not a mandatory requirement, it is strongly recommended that developers of a wind energy project should engage in active consultation and dialogue with the local community at an early stage in the planning process, ideally prior to submitting a planning application". The Draft Revised Wind Energy Guidelines (Department of Housing, Planning and Local Government, 2019) build on this recommendation, and state that, "It is essential that local communities are properly involved in the planning process, as early inclusion improves confidence in the openness and fairness of the planning process". They further suggest that to promote best practice, "planning authorities should require applicants to prepare and submit a Community Report with their planning application" and that "a condition on any subsequent planning permission should require developers to carry out the development in accordance with the approved Community Report". Both the 2006 Wind Energy Development Guidelines and the 2019 Draft Revised Wind Energy Guidelines have been taken into consideration in the approach to community consultation.

The community engagement strategy incorporates learnings from the publication on the Wind Energy Ireland website – the 'Good Neighbour IWEA Best Practice Principles in Community Engagement & Community Commitment'. Ballynisky Green Energy has abided by the direction in the handbook where it states *'IWEA members will continue to commit to full, open and transparent dialogue with local communities around proposed wind farm projects, including promoting at an early stage the company policy on local benefits and opportunities for public participation, so that local residents and the wider community are informed regarding the development of the proposals and have an opportunity to comment on their development.'*

The Community Team

The Community Team is comprised of the following people;

- Project Manager; John O'Connor,
- Communications Manager; Nadine Walsh
- Community Liaison Officer (CLO); Dr. Susan Byrne.

RECEIVED: 19/12/2025

Project Background

The proposed project is comprised of six wind turbines, located on a site within the townlands of Ballynisky, Graigoor, Ballyegny More, Kilbradran, Ballysteen, Dunmoylan, Carrons, and Lisbane in Co. Limerick.

The site is approximately 9 km north of Newcastle West and 6 km northwest of Rathkeale.

The six wind turbines have a total overall height of 158 m, a 90 m hub height and a rotor diameter of 136 m.

The site location is shown in Figure 1 below.

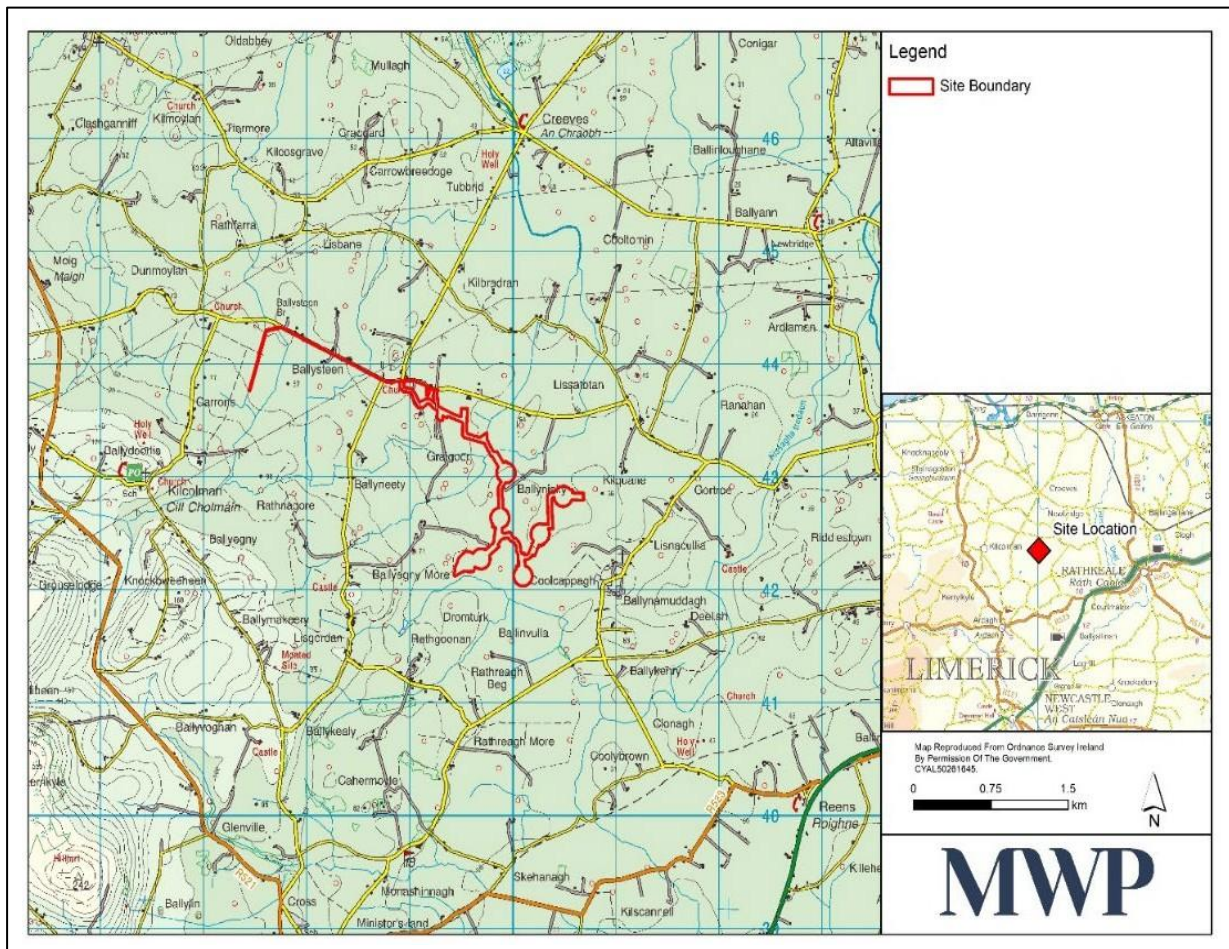


Figure 1 Site Area Map

Site Designation

The proposed wind farm is located on a site which has been designated as a *preferred area for wind energy development* by Limerick City and County Council as part of the Limerick Development Plan 2022–2028 in line with current national policy and favourable conditions for wind energy generation.

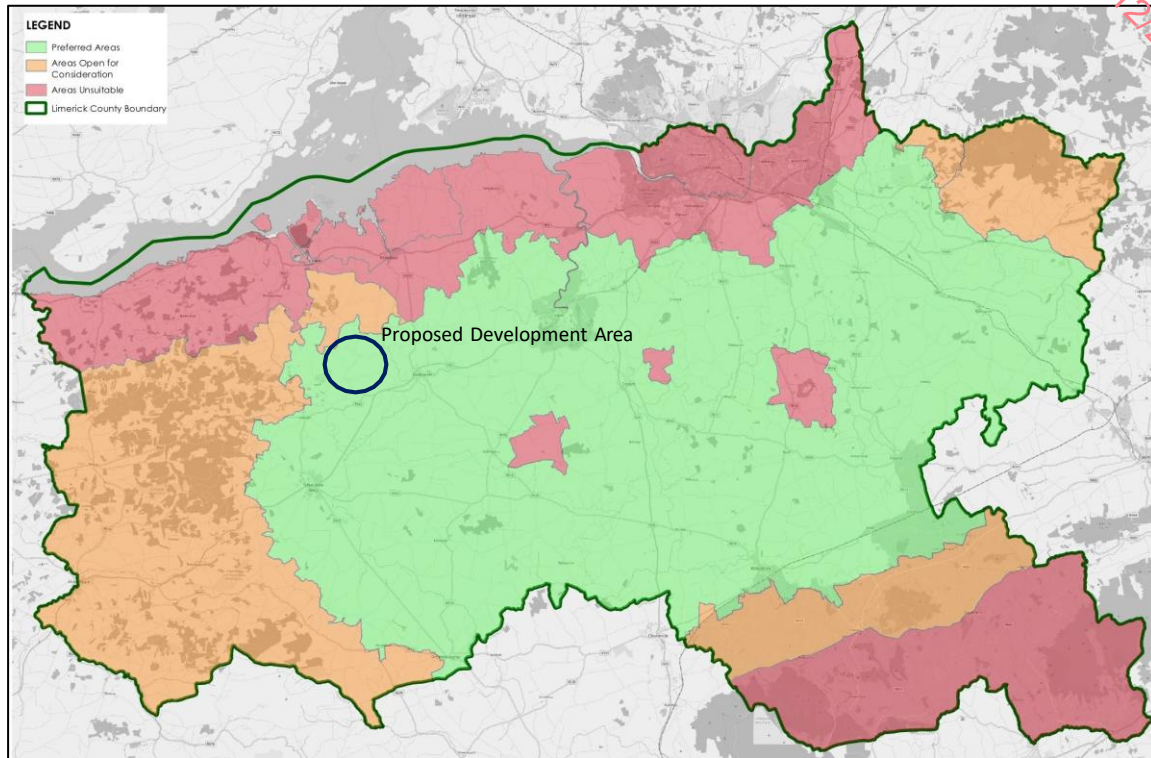


Figure 2 Limerick Development Plan Wind Energy Zoning

Export Capacity

Once operational, the project will have a Maximum Export Capacity (MEC) of approximately 27 MW.

Supporting the Limerick Climate Action Plan 2024–2029

The Limerick Climate Action Plan 2024–2029 sets out key actions that will support County Limerick in its transition to becoming a climate-resilient, biodiversity-rich, environmentally sustainable, and climate-neutral economy by 2050.

Ballynisky Green Energy's proposal for six wind turbines in Ballynisky and the surrounding townlands, contributes directly to that vision by:

- **Expanding renewable electricity generation:** The project will provide approximately 27 MW of clean, locally generated electricity, reducing reliance on fossil fuels and directly supporting the Plan's objective of decarbonising the energy sector.
- **Lowering greenhouse gas emissions:** By producing approximately 27 MW of electricity through renewable energy sources, displacing carbon-intensive electricity from non-

renewable sources, the project will help Limerick meet its county-wide emissions reduction targets in line with national and EU climate obligations.

- **Enhancing energy security and resilience:** Locally generated renewable energy reduces dependence on imported fuels, creating a more secure and resilient energy supply for the county.
- **Supporting a just transition and green economy:** Construction and ongoing operation of the proposed project will create local employment opportunities and contribute to the development of skills in renewable energy, aligning with the Plan's goals to foster a climate-smart economy.
- **Community and environmental benefits:** Through a dedicated community benefit fund, the Ballynisky Green Energy project could support local sustainability initiatives, in keeping with the Plan's aim to deliver climate action that is inclusive and community focused.
- **Future-proofing infrastructure:** Large-scale renewable projects such as the Ballynisky Green Energy project will position Limerick to meet long-term 2050 targets while also delivering measurable progress within the 2024–2029 timeframe.

Supporting the Limerick Development Plan 2022–2028

The Limerick Development Plan emphasises the transformation to a carbon-neutral, environmentally sustainable economy, positioning the city and county as a leader in green growth.

The proposed project reinforces these objectives by:

- **Delivering local clean energy generation:** Six modern wind turbines will supply a significant volume of renewable electricity, helping to decarbonise Limerick's energy system in line with the Plan's targets.
- **Reducing reliance on fossil fuels:** By displacing carbon-intensive energy sources, the project will contribute directly to lowering emissions and supporting the county's transition to a low-carbon future.
- **Aligning with strategic policies on climate action:** The Development Plan calls for investment in renewable energy infrastructure and the promotion of sustainable communities; the proposed project addresses both priorities.
- **Supporting rural development and resilience:** The location of the project will bring investment, employment, and community benefit funding to rural areas, consistent with the Plan's goal of balanced regional development.
- **Enhancing Limerick's role as a leader in green growth:** Large-scale renewable projects such as this position the county at the forefront of Ireland's clean energy transition, reinforcing its reputation as a place for sustainable innovation.
- **Contributing to long-term strategic vision:** By aligning with national and regional climate commitments, the project ensures that Limerick is well placed to meet its 2030 and 2050 decarbonisation objectives.

Community Benefits and Community Benefit Fund Distribution

Ballynisky Green Energy is committed to creating a lasting and meaningful impact on the community surrounding the proposed project. Should planning permission be granted, we aim to contribute positively for over 35 years by working in partnership with local people, supporting community resources, and investing in long-term community assets. Our goal is to ensure that the benefits of this proposed project are shared and sustained well into the future.

- **Environmental:** Based on the current project scope, the proposed development has the potential to displace over 26,609 tonnes of CO₂ each year and provide the capacity to power in the region of 16,894 homes.
- **Employment:** The development will support employment in the energy supply and construction/maintenance sectors, creating approximately 30-35 direct and indirect jobs. The team is committed to working with local suppliers where possible to source engineering works, materials, equipment hire and catering.
- **Financial:** In line with the Community Benefit Fund Guidelines, governed by the Sustainable Energy Authority of Ireland (SEAI), and based on the current project scope, the project will generate a Community Benefit Fund estimated at €2.25 million over the first 15 years of operation. This amounts to approximately €150,000 per annum.

The value of the annual fund will be dependent upon energy production.

A worked example of the community benefit fund is shown below.

Description	% of Fund	Annual Amount
Initiatives and projects that support Sustainable Development Goals	40 %	€60,000
Local Clubs, societies and near neighbours	50 %	€75,000
Administration	10% (Max)	€15,000

Figure 3 Worked example of how the Community Benefit Fund is allocated

Ballynisky Green Energy will work in partnership with residents in the local area to form a committee to oversee the administration of the Community Benefit Fund. The committee will be established once the project successfully completes the planning permission process and the necessary grid connection process.

Methodology

Strategy Objectives

The primary aim of the community engagement strategy is to share key information relating to the proposed project, thereby providing the community with the necessary information to arrive at well-informed opinions regarding the development. It is also important to share information regarding the current climate crisis and how this development can play a role in building a more sustainable community for future generations.

The Approach

Ballynisky Green Energy strives for transparent and interactive engagement with the communities surrounding the proposed project. The aim is to address the four pillars of sustainability: human, social, environmental, and economic.

Ballynisky Green Energy strives to develop these benefits in cooperation with local communities throughout the stages outlined below.

Table 1 Key Engagement Stages

TYPE	STAGE 1	STAGE 2	STAGE 3		STAGE 4
Online	Website Launch	Website updates section added with e-resources and survey	Website update with public consultation materials including maps	Planning Application Submission & Validation	Website update with notification of Planning application
Offline	Letter & Leaflet 1	Invitation to Public Exhibition/Clinic	Follow-up Letter		Print materials are posted where requested.
In-Person	Door to Door	Public Exhibition/Clinic	Wind Farm Tour		Additional 1-1 meetings where requested
Press/ Advertising	Advert 1 & Press Release	Advert 2 & Press Release	Advert 3: Notice of submission		Press Statement
Print Materials	Leaflet 1	Climate Action Brochure	Invite to Exhibition/Clinic		Project update newsletter
Community Engagement	Engagement with local representatives	Email and posted invitation to Public Exhibition/Clinic	Follow up for community feedback		Continued engagement

Community Engagements Phases

Community Engagement is undertaken in three distinct phases.

Phase One: Research

- **Housing Registrar:** Mapping of the area to identify houses within 2km of the project. A suitable route is identified for door-to-door consultation with residents within 1km.
- **Electoral District:** Research is conducted to identify locally elected public representatives including County Councillors, TDs and Senators.
- **Community Overview:** Using social media and online research, key community groups such as schools, religious organisations, clubs, charities, and businesses are identified.

Phase Two: Engagement

Our approach to community and stakeholder engagement aims to reach all community members at multiple touch points throughout pre-planning and for the life span of the proposed project (i.e. construction, operation and decommissioning).

Figure 4 provides a summary of the key communication channels used. We continually review these channels and incorporate community feedback to optimise the engagement process, ensuring it continues to evolve and remain relevant throughout the project's life cycle.



Figure 4 Community Engagement Touch Points

This process aims to provide residents and other key stakeholders with multiple means of communication and numerous opportunities to share their feedback or discuss the proposed project with the Community Team. Information on the proposed project is shared in various ways, including face-to-face meetings, video calls, phone or email contact, through the dedicated website, post or at wind farm tours.

Phase Three: Review

A review takes place at each stage of the consultation process. Feedback is reviewed, and the next step is determined based on the requests received. This has included publishing further details on topics on the Frequently Asked Question page on the website or conducting additional face-to-face meetings, emails or phone calls.

Community Consultation Milestones

The table below provides a timeline and description of the consultation undertaken to date.

Table 2 Community Engagement Milestones

Date	Description of Activity
20 October 2022	Project Website Launched www.ballyniskygreenenergy.ie
21 October 2022	Letter & Brochure posted to each household within c. 1 km of the project
21 October 2022	Letter & Brochure posted to each household within c. 2 km of the project
21 October 2022	Phone calls and emails to local public representatives
26 October 2022	Weekly Observer: Advert launching the community consultation process
9 - 11 November 2022	House-to-house visits to households within c. 1km of the proposed project
17 November 2022	School Tour with Kilcolman NS
1 December 2022	Advert in the Weekly Observer to announce community exhibition event
2 December 2022	Emails to local representatives re community exhibition event
7 December 2022	Community Exhibition: Coolcappa Community Hall from 2pm to 7pm
16 December 2022	Follow-up letter regarding an update to the website (consultation material)
28 February 2023	School Tour with Coolcappa NS
March 2023	Website update detailing school visits
April 2023	Website update with downloadable project materials
May 2023	Email correspondence with residents
May 2023	Website update with additional project leaflet
January 2024	Response to local media request
January 2024	Response to information request from local community group
January 2024	Email correspondence with residents
February 2024	Email correspondence with residents
February 2024	Email correspondence with local representatives
March 2024	Response to information request from local community group
March 2024	Response to information request from local school
March 2024	Response to two local media requests
March 2024	Email correspondence with residents
April 2024	Response to information request from local community group
April 2024	Email correspondence with residents
April 2024	Continued correspondence with local school
May 2024	Face-to-Face meeting with a resident
September 2024	Website Update
December 2024	Website Update
August 2025	Email correspondence with local community group
September 2025	Planning Notification Letter
Ongoing	Engagement with residents, community groups and local representatives in person, and via phone and email

RECEIVED: 19/12/2025

Project Website Launch

The project website, www.ballyniskygreenenergy.ie, went live in October 2022. This represented the launch of the community engagement program.

The website is the key information hub, providing key facts on all aspects of the project, such as company information, contact details, project-specific details and information on renewable energy.

The website was developed with access for both mobile and desktop viewing.

The project website has received over 1000 visitors to date with the average user spending just over two and a half minutes on the site.

Where residents were unable to access the website, printed versions of all documents were posted and, in some cases, hand-delivered to the requester.

Notification to TD'S & Councillors

Direct emails and phone calls to all local representatives, including Councillors and TDs, occurred at three stages of the consultation process:

- At the outset, outlining details of the proposed project and the launch of community engagement
- Secondly, inviting them to attend the public exhibition event
- The third communication was issued to draw attention to the spread of inaccurate project information (See Figure 8 below)

Notice of Commencement of Public Consultation

An advertisement was placed in the Weekly Observer Newspaper on 26th of October 2022, to announce the commencement of the community consultation.




Figure 5 Notice of Public Consultation

Project Letter & Leaflet

On the 22nd of October, 2022, a letter and brochure were posted to households within approximately 2km of the proposed project.

RECEIVED: 19/12/2025



BALLYNISKY
Green Energy

Ballynisky Green Energy
Station Road
Adare
Limerick
Telephone: +353 (0)61 975200
Mobile: +353 (0)86 8525000
Email: info@ballyniskygreenenergy.ie

October 2022

Dear

I am writing to you on behalf of Ballynisky Green Energy. This company is managed by a local, Limerick firm called Greensource, based in Adare, Co. Limerick which has specialised in the development and management of renewable energy projects for over ten years.

The need for energy security and climate action has led to an increased focus on renewable energy generation in Ireland. Our country faces an extraordinary challenge as it moves away from an energy system primarily based on fossil fuels to one powered by renewables. The Limerick City and County Development Plan objectives, as well as the Irish Government's Climate Action Plan, identifies onshore wind as a key component to enhancing clean electricity generation, meeting our environmental targets, and moving to a more secure energy future. We believe that wind energy can play a central role in Ireland's transition to a low carbon economy.

We are pleased to begin consultation with you about our preliminary proposals for the Ballynisky Green Energy project, which has the potential to deliver clean energy to the equivalent of 15,000 homes. The proposed project is a 6-turbine windfarm, on a 100-hectare site located in the townland of Ballynisky, outside Coolcappa, in West Limerick.


Communities neighbouring wind developments play a vital role in supporting the generation of green energy. This will in turn benefit key local projects and support wider investment in the local community. In line with Community Benefit Fund Guidelines, governed by the Sustainable Energy Authority of Ireland (SEAI), and based on the current project scope, Ballynisky Green Energy will generate a Community Benefit Fund estimated at €2.25 million over the first 15 years of operation. This amounts to approximately €150,000 per annum. There will be opportunities for residents to engage directly to manage the allocation of the financial contribution.

This is the beginning of our Community Engagement process, which will involve open discussions with residents and interested parties, with the outcome of these discussions being used to help maximise the benefits of the project for the community. We also have a dedicated team in place to provide a direct line of communication for you and all residents to engage with us throughout the pre-planning process. You can contact us via phone, email, or visit our website: www.ballyniskygreenenergy.ie.

Over the next few weeks, our team will be going door to door to discuss the project with you in person. In the interim, please find enclosed a leaflet with further information in relation to our proposal.

We look forward to meeting with you in the near future.

Yours Sincerely,



Susan Byrne,
Community Liaison Officer
Ballynisky Green Energy

www.ballyniskygreenenergy.ie

Figure 6 Letter to Residents

Information Leaflet

The leaflet shown below was posted to all households within approximately 2km of the proposed project and was also made available to download from the website. Additional copies were available at the Public Exhibition.

RECEIVED: 19/12/2025

BALLYNISKY Green Energy

Building Wind Energy, Powering Sustainable Communities

Providing clean energy for 15,000 households in Ballynisky and surrounding communities

BALLYNISKY GREEN ENERGY PROJECT

Greensource is a fully owned and managed renewable energy company, based locally in Adare County Limerick. It is pleased to announce the final stage of development of the Ballynisky Green Energy Project – which has the potential to deliver wind energy to the equivalent of 15,000 households.

The project is a proposed 6-turbine wind farm, located on a 100-hectare site neighbouring the townland of Ballynisky, outside Coolappan, West Limerick. This site has been designated as a preferred area for wind energy development by Limerick City and County Council as part of the Limerick Development Plan 2022–2026. It is with current national policy and favourable conditions for wind energy generation.

COMMUNITY ENGAGEMENT

Ballynisky Green Energy is committed to creating a wind energy development that is socially responsible, and provides a substantial community benefit fund where community participation plays a central role.

Our company has commenced an extensive community engagement and consultation programme to capture views and provide key information to residents. A dedicated team is in place, providing a direct line of communication for local residents and the wider community. Consultation, undertaken in line with the latest public health guidelines, will also take place for those in the wider area to provide up-to-date information and opportunities for the community to understand more about this proposed project.

Project Process

1. Community Engagement
2. Planning Process
3. Construction Phase
4. Operation Commences

COMMUNITY BENEFITS

- Communities neighbouring wind developments play a vital role in supporting the generation of local green energy. This will in turn benefit local projects and support wider investment in the local community.
- Through the Community Benefit Fund, the local area will benefit from direct financial investment of an estimated €225 million over the first 15 years of operation. This amounts to approximately €150,000 per annum.
- Up to 30% of the fund will be designated to local neighbours and community-based projects. 40% of the fund will be awarded to community projects that relate to the Sustainable Development Goals and 10% will be assigned to the administration of the fund.
- A local committee will be elected to manage the investment in projects which support sustainable community development.
- This project will provide green energy to the equivalent of 15,000 households, offsetting carbon emissions by 15,000 tonnes CO2 per year.
- The project will also provide a range of economic benefits, including approximately 30 direct and indirect jobs in the area, particularly during the construction phase.
- We are committed to working with local suppliers, to source engineering works, materials, equipment, hire, training, and other potential services.

ABOUT GREENSOURCE

Greensource is an innovative Irish renewable energy company with an office in Adare Co. Limerick that specialises in the development of renewable energy projects, working with communities from pre-planning to operation, and creating long lasting local partnerships. Greensource has over ten years development and operational experience.

Greensource has a highly skilled and experienced team who are committed to developing projects with successful outcomes for all stakeholders. Working with local suppliers and care for the local environment, the team has a strong track record, being successfully completed wind energy and other renewable projects throughout Ireland.

CONTACT DETAILS
Ballynisky Green Energy
Station Road,
Adare,
Co. Limerick

CALL US
Office 061 975 200
Mobile 086 852 5000

MESSAGE US
Email: info@ballyniskygreenenergy.ie

www.ballyniskygreenenergy.ie

Figure 7 Resident Leaflet

Letter in relation to Concerns Regarding Misinformation

On the 22nd of February 2024 the below letter was issued to local representatives.



Ballynisky Green Energy
Station Road, Adare, Limerick
Telephone: +353 (0)61 975200
Mobile: +353 (0)86 8525000
Email: info@ballyniskygreenenergy.ie

RECEIVED: 19/12/2025

Subject: Concerns Regarding Misinformation about the
Proposed Ballynisky Green Energy Wind Farm

Dear [Recipient's Name],

I hope this letter finds you well. My name is Nadine Walsh and I am the Community Manager for Ballynisky Green Energy. I am writing to express my concerns as it has come to our attention that there are inaccuracies being spread about the proposed Ballynisky Green Energy wind farm. We believe it is crucial to ensure that the correct facts are known by public representatives such as yourself in advance of the community meeting taking place next week. Please note, this meeting is being arranged by Coolcappa Community Action Group and no member of the Ballynisky Green Energy project team will be present. I outline the base information of the proposal below:

- The proposed project is a 6-turbine wind farm, with an overall height of up to 158 meters. The hub height (tower) is 90 meters.
- The project is situated on a 100-hectare site in the townland of Ballynisky, outside Coolcappa.
- The site is designated as 'preferred' for wind energy development by Limerick City and County Council, as outlined in the Limerick Development Plan 2022–2028.
- The wind farm aims to provide green energy equivalent to that of 18,000 households, contributing to offsetting 25,000 tonnes of CO2 emissions annually.
- A Community Benefit Fund, estimated at €2.25 million over the first 15 years, will be established for local projects. The fund will be administered by a locally elected committee.
- Extensive community engagement has taken place since October 2022, including door-to-door visits, postal and email communication, and an exhibition in Coolcappa Community Hall in December 2022. On numerous occasions we have offered to meet with Coolcappa Community action group, and we continue to support by means of providing full responses to information requests received.
- Ballynisky Green Energy assures that no shadow flicker will be experienced at any residence or local amenity.
- The project will comply with noise guidelines and relevant legislation.
- The project is being developed by Greensource, based in Adare, the same company is responsible for the nearby Carrons wind farm in Kilcolman.

www.ballyniskygreenenergy.ie

RECEIVED: 19/12/2025



Ballynisky Green Energy
Station Road, Adare, Limerick
Telephone: +353 (0)61 975200
Mobile: +353 (0)86 8525000
Email: info@ballyniskygreenenergy.ie

Ballynisky Green Energy is currently in the pre-planning consultation stage and plans to submit a planning application to Limerick City and County Council in the spring of 2024. Further information about the project is available on the official project website at www.ballyniskygreenenergy.ie where updates on the application status will be posted in due course. Exhibition materials such as the maps presented to the community are available on the public exhibition section also.

I urge you to consider these accurate details when discussing the proposed wind farm with constituents and fellow councillors. It is essential that the public is well-informed to make decisions based on facts rather than misinformation.

Thank you for your attention to this matter, and I trust that you will ensure a fair and accurate representation of the Ballynisky Green Energy wind farm proposal.

Should you need any further information, please do not hesitate to contact us and the team and I will be most happy to assist.

Yours Sincerely,

Nadine Walsh,

The Community Team at Ballynisky Green Energy

www.ballyniskygreenenergy.ie

Figure 8 Letter re: Misinformation

Community Exhibition

A public exhibition event was held on December 7th, 2022, in Coolcappa Community Hall, which is located within close proximity to the proposed project site.

The purpose of this event was to present information on the proposed project to local residents and the general public, and to allow residents consult with the Community Team and local representatives and other relevant specialists

An invite was posted to all residents within approximately 2km of the proposed project and a notice was published in the local paper, the Weekly Observer on 1st of December, 2022.

Personal emails were sent to local representatives including Councillors and TDs, and the project website was updated to include details of the upcoming event.

BALLYNISKY
Green Energy

**PRE-PLANNING
PUBLIC EXHIBITION
NOTICE**

INVITATION TO ATTEND
Ballynisky Green Energy would like to invite the local community to attend a walk-in consultation.

This public event provides an opportunity to view the proposals for the Ballynisky Green Energy wind farm and to give feedback on the preliminary proposals prior to the submission of a planning application in 2023.

PROJECT SUMMARY

- Power for over 15,000 homes.
- 6 turbine wind farm
- €150k fund to the locality annually
- Located in the vicinity of Ballynisky, outside Coolcappa, in West Limerick

Venue: Coolcappa Community Hall, V42 HF60
Date: Wednesday December 7th **Time:** 2 - 7pm

FOR FURTHER INFORMATION VISIT
www.ballyniskygreenenergy.ie

Figure 10 Public Consultation Notice

The public exhibition attracted over seventy attendees from the area. Comment and feedback forms were provided. All queries received were responded to where contact details were supplied.

All materials presented at the public exhibition were made available on the project website the following day.

RECEIVED: 29/12/2023

Engagement with Newcastle West Golf Club

As part of the engagement process, the community team reached out to various local businesses and community organisations. On October 6th, 2022, two members of the Ballynisky Green Energy project team met with representatives of the Newcastle West Golf Club management team to introduce the project. This engagement was followed by a further meeting on January 23rd, 2024, during which the Ballynisky team provided updates and continued dialogue with the club regarding the project's progress. To support transparency and keep stakeholders informed, Ballynisky Green Energy subsequently issued a project overview document to club officials on February 16th 2024.

Education: School Tours

As part of the education program, the Community Team took students and teachers from both Coolcappa NS and Kilcolman NS on a tour of the nearby Carrons wind farm, where they met with the ecology and engineering team for an information session on the workings of wind turbines, renewable energy, climate change and biodiversity.

As part of the engagement process, Ballynisky Green Energy endeavoured to open conversations with the community about the pressing need for renewable energy and the imminent threat of the climate crisis. The Community Team detailed how the proposed project aligns with the Irish Government's carbon emissions targets, and the need for a secure energy future.

Phone Calls

Dedicated project phone lines (061 975 200 / 086 852 5000) were opened in October 2022 with business hours of Monday – Friday from 9 – 5 pm for the community to discuss the proposed development with the Community Liaison Officer (CLO).

This phone number is published on the website and is added to all printed materials. This service remains open to date.

Emails

A dedicated email address: info@ballyniskygreenenergy.ie is managed and monitored daily by the Community Team. All emails received are responded to in a timely manner and phone and in person consultations were offered to those seeking additional support.

Ongoing Contact

Throughout all stages of the development, a dedicated Community Team for the project will be contactable by phone and email. The frequency and nature of interactions and communications will be dependent on the stage of development. As the project advances, updates relating to the project's status and activity will be posted to the project website.

Resources

Numerous materials were publicly available on the project website, such as project leaflets, maps and information on Climate Change. Resources were also distributed offline during various phases of the public consultation process during door-to-door engagement and at the public consultation event and wind farm tours. Printed copies of all materials were also posted upon request and the project's key information leaflet was posted to residents within c. 2km of the project area.

The list of resources included two leaflets with project information, a brochure detailing the effects of climate change and Ireland's renewable energy targets, together with maps of the project area turbine layout. An educational leaflet for children from Wind Energy Ireland was circulated to the two school tours, which explained the science of wind energy.

Key Statistics on Engagement:

The Community Team called to 42 houses within the vicinity of the proposed project. 18 residents engaged directly with the community team during the initial face-to-face meetings. Following the initial door-to-door engagement, fourteen telephone calls and nine email correspondences were recorded. All communications were replied to in a timely manner, the majority of which were within a 48-hours.

The project website has received over 1000 visits at the time of writing the report. The average user engagement time lasted over 2.5 minutes, which indicates that users were engaged in the details of the project. A project survey was also available on the site for users to provide feedback on the information reviewed on the site.

Printed feedback forms were available at the public exhibition (14 recorded).

See summary below:

Table 3: Engagement Statistics

Houses Visited	42	Surveys Received	14
Houses Answered	18	Exhibition Attendees	70+
Houses Unanswered	24	Website Visits	1000+

Key Issues Raised During Consultation

Noise

Some residents questioned how the proposed development could potentially impact them from a noise perspective, particularly at nighttime, and questioned how noise impacts could be mitigated. The project team assured residents that Ballynisky Green Energy is committed to complying with all relevant noise limits and will ensure the project is constructed and operated in compliance with planning permission. Extensive surveys have been conducted during the pre-planning process to demonstrate that the proposed turbines will not exceed legislated noise levels.

Shadow Flicker

Residents and members of the public raised queries about the potential impact of shadow flicker. In response to this and in line with recommendations of the Draft Revised Wind Energy Development Guidelines (2019), Ballynisky Green Energy has committed to no shadow flicker at dwellings or community facilities. The design process, set-back distances and mitigation measures ensure that there will be no instance of shadow flicker at residential properties or community facilities.

Local Action Group

A local action group was formed in May 2023 in opposition to the proposed project.

The Community Team has actively responded to all queries received from the Community Action Group. The Community Team always aims to clarify concerns relating to the project and continues to reiterate that the proposal is designed in compliance with all relevant regulations.

The Community Team has offered to meet with the group on a number of occasions and remains open to continued engagement.

Coolcappa National School

A letter was received from the Board of Management of Coolcappa National School. The letter addressed three main issues: noise, shadow flicker, and Health and Safety. In response to the letter, Ballynisky Green Energy engaged directly with Coolcappa National school and provided a detailed response from independent consultants Malachy Walsh and Partners (MWP), acting on behalf of Ballynisky Green Energy.

Public Opinion

Public opinion on wind farms in Ireland remains overwhelmingly positive, particularly among those living in close proximity to an operational project. According to the SEAI, RESS National Survey, a significant 73% of respondents who reside within 1 kilometre of a RESS1 wind farm project hold positive or very positive attitudes towards wind energy. Furthermore, 65% of these respondents believe that Ireland has too few wind farms, indicating a strong local support for the expansion of wind energy infrastructure.

Summary

This report outlines Ballynisky Green Energy's approach to community engagement for its proposed project in Ballynisky and surrounding townlands. The project consists of six wind turbines together with ancillary infrastructure and aligns with both the Limerick Development Plan 2022–2028 and the Limerick Climate Action Plan 2024–2029, supporting our country's goals of reducing emissions, promoting renewable energy, and transitioning to a low-carbon economy.

Ballynisky Green Energy follows best practice principles set out by Wind Energy Ireland (WEI) to ensure its approach to community consultation is open, transparent, and respectful. These principles emphasise early and meaningful engagement, where residents are informed and included from the outset of project development. In line with WEI's guidance, Ballynisky Green Energy established multiple communication channels, including a dedicated project website, postal updates, door-to-door visits, public advertisements, and community clinics to provide clear information and invite feedback. Since consultation launched in October 2022, the Community Team has worked to listen actively to concerns, offer technical details in accessible formats, and highlight both environmental and community benefits. This approach reflects WEI's standard of promoting trust, collaboration, and shared value between renewable energy developers and local communities.

Ballynisky Green Energy remains committed to meaningful engagement with all members of the community throughout the planning process. We hope that the information provided, and the initiatives undertaken are of value to residents and contribute to a constructive dialogue.

The Ballynisky Green Energy project is expected to displace 26,609 tonnes of CO₂ annually and power approximately 16,894 homes. We believe it is vital to keep the focus on the overarching challenge as we collectively face the urgent need to address climate change. By fostering collaboration between communities and projects like the proposed Ballynisky Green Energy Project, we can work together to advance a sustainable future. Through shared responsibility and active participation, local communities can play a central role in shaping renewable energy solutions, that deliver not only environmental benefits but also enduring social and economic value.

References

- Coolcappa Community Action Group (2022). *Coolcappa Community Action Group*. [online] Facebook.com. Available at: <https://www.facebook.com/p/Coolcappa-Community-Action-Group-100092250226877/>.
- Draft Revised Wind Energy Development Guidelines, December 2019 (DHPLG, 2019). Department of Housing Planning and Local Government. <https://assets.gov.ie/static/documents/draft-revised-wind-energy-development-guidelines-december-2019-385c92c2-16f9-4511-80bf.pdf>
- Government of Ireland. (2023). *Climate Action Plan 2023*. Retrieved from <https://www.gov.ie/en/publication/7fbe7-climate-action-plan-2023/>
- Government of Ireland. (2025) *Climate Action Plan 2025*. Available at: https://assets.gov.ie/static/documents/c491032e/DECC_Climate_Action_Plan_2025_Main_Report_-_Final_Web.pdf
- Limerick City and County Council (2022). *Limerick Development Plan 2022–2028*. Available at: <https://www.limerick.ie/council/services/planning-and-property/development-plans/limerick-development-plan-2022-2028>
- Limerick City and County Council (2024). *Climate Action Plan 2024–2029*. Available at: <https://www.limerick.ie/council/newsroom/news/limerick-climate-action-plan-2024-2029-published>
- Rabbitts, N. (2024). *Education Minister asked to step into Limerick wind farm row*. [online] Limerick Leader. Available at: <https://www.limerickleader.ie/news/environment/1643424/education-minister-asked-to-step-into-limerick-wind-farm-row.html>
- Raleigh, D. (2024). *Limerick protesters tilting at Coolcappa windmills*. [online] Limerick Post Newspaper. Available at: <https://www.limerickpost.ie/2024/03/14/298584/>
- SEAI (2023). *Irish national survey of households near new commercial wind and solar farms SURVEY METHOD AND SELECTED RESULTS*. [online] Available at: <https://www.seai.ie/publications/SEAI-RESS-National-Survey.pdf>
- Sustainable Energy Authority of Ireland (SEAI). (n.d.). *Renewable Energy in Ireland*. Retrieved from <https://www.seai.ie>
- Wind Energy Development Guidelines (DEHLG, 2006), Department of the Environment, Heritage and Local Government. <https://www.gov.ie/en/department-of-housing-local-government-and-heritage/publications/wind-energy-development-guidelines-2006/>
- Wind Energy Ireland. (n.d.). *The Future of Wind Energy in Ireland*. Retrieved from <https://windenergyireland.com>